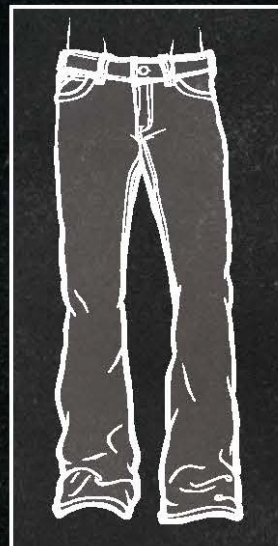
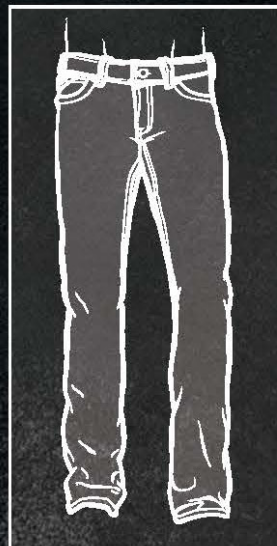
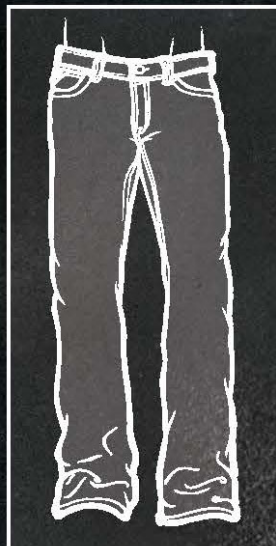
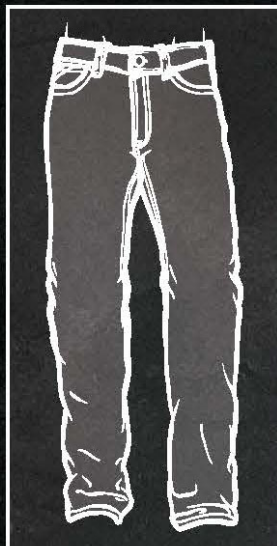
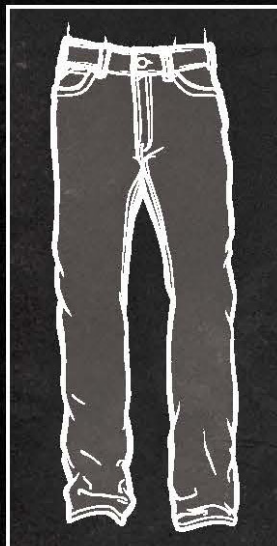


MEN'S M-SERIES DENIM

DELIVERS
VARIED
2015

Fit Guide



M2 RELAXED BOOT CUT

- FEATURES
- // Relaxed through waist, hip & thigh
 - // Lower rise
 - // Stackable boot cut

M3 LOOSE STRAIGHT LEG

- FEATURES
- // Extra relaxed through waist & hip, loose through thigh
 - // Lower rise
 - // Straight leg

M4 LOW RISE BOOT CUT

- FEATURES
- // Relaxed through waist, hip & thigh
 - // Low rise
 - // Fashion boot cut

M5 SLIM FIT STRAIGHT LEG

- FEATURES
- // Slim through seat & thigh
 - // Low rise
 - // Straight leg

M6 SLIM FIT BOOT CUT

- FEATURES
- // Slim through seat & thigh
 - // Low rise
 - // Wider boot cut

Fit Matters

CONFIDENT AND BUILT TO BACK IT UP, MEN'S M-SERIES DENIM IS EXPERTLY CONSTRUCTED WITH A FOCUS ON QUALITY, CRAFTSMANSHIP AND STYLE.

Working, riding, or playing, these are jeans that take it on—styled to go anywhere, anytime.

- FEATURES
- // Ring-spun denim
 - // No-rub comfort inseams
 - // Loop Lock®
 - // Anchored belt loops
 - // Heavy-duty zippers and hardware
 - // I-pocket
 - // Extra deep front pockets

BASED ON MEN'S SIZE 32X36		M2	M3	M4	M5	M6
FIT	FRONT RISE	10¾	10¾	10¾	10¾	10¾
	BACK RISE	15½	15½	15½	15	15
	WAIST	34¾	34¾	34½	33¾	33¾
	SEAT	43½	44¼	43½	42¾	42¾
	THIGH	25¼	26½	25½	25	25
	KNEE	18¾	19¾	18¾	18½	18½
	BOTTOM OPENING	18	18	19	18	20

WOMEN'S FASHION DENIM

DELIVERS
VARIED
2015

Fit Guide



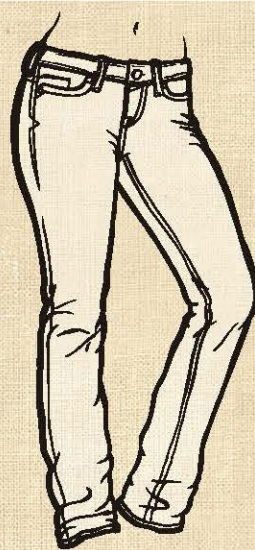
Ruby

- FEATURES
- // Slim & sexy
 - // Low rise
 - // Slim through hips & thighs
 - // Boot cut
 - // Stretch



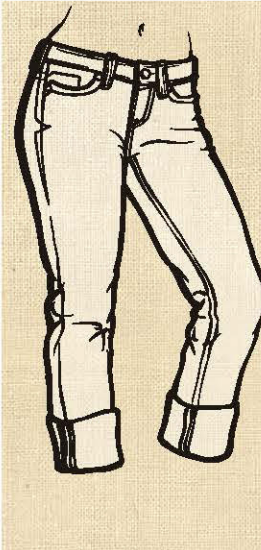
Turquoise

- FEATURES
- // Fun & flirty
 - // Mid rise
 - // Boot cut
 - // Stretch



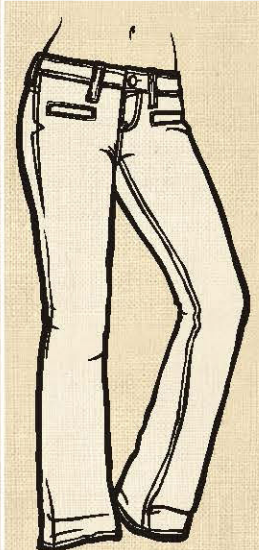
Amber

- FEATURES
- // Tomboy style
 - // Low rise
 - // Relaxed through hips & thighs
 - // Boot cut
 - // Stretch



Boyfriend

- FEATURES
- // Relaxed flattering fit
 - // Low rise
 - // Straight leg
 - // Stretch



Trouser

- FEATURES
- // Full trouser leg
 - // Mid rise
 - // Slim through hips
 - // Stretch

Fit Matters

CURVE HUGGING DENIM FEATURING SUPERIOR RECOVERY AND SHAPE RETENTION FOR A FIT THAT WON'T QUIT.

Flattering lines accentuate your figure from every angle. Boot cut or skinny styles let you rock your boots the way you like. Vintage washes and eye-catching details grab attention with every stride.

- FEATURES
- // Ring-spun denim
 - // No-rub comfort in seams
 - // Anchored belt loops
 - // Contoured waistband
 - // High-quality zippers and hardware
 - // No-see pocket lines

BASED ON WOMEN'S SIZE 28L		RUBY	TURQ	AMBER	BOYFRND	TROUSER
FIT	FRONT RISE	8"	8 1/2"	8 1/2"	9"	8 3/4"
	BACK RISE	13 3/4"	14 1/4"	13 1/2"	14"	13 3/4"
	WAIST	31 1/4"	31 1/4"	32 1/4"	33 1/2"	31 1/4"
	SEAT	38 3/4"	39 1/4"	40"	40 1/2"	39"
	THIGH	22 1/4"	22 1/4"	23 1/4"	24"	23"
	KNEE	15 1/2"	15 3/8"	17 1/4"	17 1/2"	18 1/4"
	BOTTOM OPENING	19"	19 3/4"	17 3/4"	16"	22"

INSEAM	SHORT	31
	REGULAR	33
	LONG	35

ARIAT SIZING		25	26	27	28	29	30	31	32	33	34
SIZES	CONVENTIONAL JUNIORS*	0	1	3	5	7	9	11	13	15	17
	CONVENTIONAL WOMEN'S	2	4	6	8	10	12	14	16	18	20